

# PERSONAL NAVIGATOR



Sunrise: 6:56 am Sunset: 5:33 pm  
Evening Attire: Semi Formal

Today: Partly Cloudy High: 76°F/24°C  
Tomorrow: Cloudy High: 76°F/24°C

THURSDAY, DECEMBER 3, 2015

DAY AT SEA

## Disney's Believe

Genie from Aladdin and many of Disney's most beloved magic makers take a father on a magical journey to show him that anything is possible if you just believe.

WALT DISNEY THEATRE  
DECK 3 & 4, FORWARD

6:15 pm & 8:30 pm



As a courtesy to all Guests, we kindly advise that the saving of seats is **not** permitted in the Walt Disney Theatre.

Assistance available at the entrance to the Walt Disney Theatre 30 minutes prior to show time.

## Disney FANTASY Fun Facts

While the cute baby elephant, Dumbo serves as a fantastic stern character, in real life he would have to gather 24,266 other adult male African elephants to match the weight of the Disney Fantasy.

A "light point" is shipbuilders' lingo for anything that's a light. There are approximately 80,000 light points on the Disney Fantasy – "double the normal number for a ship this size," according to Meyer Werft, the shipyard in Germany where the Disney Fantasy was built. The large number is the result of Disney's flair for theatrical experiences – accomplished primarily with LEDs and other "environmentally friendly" lighting.

Looking upward in the ship's Lobby Atrium brings Guest's eye-to-crystal with a glowing piece of "Art Nouveau-inspired jewelry" – a cascading chandelier flowing downward from a massive stained-glass flourish on the ceiling in peacock hues of greens and blues. The chandelier itself is more than 10 feet in diameter, a one-of-a-kind work of art evoking a peacock in stained glass and more than 60,000 clear Swarovski crystal beads.

### Debark Talk Broadcast

Important information regarding disembarkation procedures for your journey home will be covered in this debarkation briefing. The broadcast will be shown continuously on channel 5 of your stateroom television for your convenience.



### ADULT VARIETY ACT

Hypnotist Ricky Kalmon will reveal the secrets of losing weight and reducing stress with the use of self-hypnosis.

Buena Vista Theatre (18+), Deck 4 & 5, Midship,  
11:00 am

Hypnotist Ricky Kalmon brings you the only adult exclusive comedy show where the audience becomes the stars!

Walt Disney Theatre (18+),  
Deck 3 & 4, Forward,  
10:45 pm



### Sport's Simulators

Digital sports simulators are available at Goofy's Sports Deck on Deck 13, Aft. This state-of-the-art virtual sports experience includes golf, basketball, baseball, hockey, football and soccer. Book now at the Port Adventures desk, Deck 5, Midship.

## Don't Miss:

### Good Morning Disney Fantasy

Channel 5 - Repeated from 5:00 am - 12:00 pm

Tune in to channel 5 as your Cruise Director and Assistant Cruise Director highlight the upcoming events and activities for the day.

### Captain's Signing

White Caps, Deck 3, Forward - 12:15 pm

Meet the Master of the Disney Fantasy and have your cruise memories signed.

### Storytime with Mrs. Claus

Lobby Atrium, Deck 3, Midship - 1:15 pm

Full of fun and whimsy, Mrs. Claus makes a very special visit to the ship's atrium to read classic holiday tales to all the children - and children at heart!

### Family Variety: Michael Holly

Walt Disney Theatre, Deck 3 & 4, Forward - 2:00 pm

Featuring the Comedy & Juggling of Michael Holly, in this fun for all the family cabaret show.

### Majority Rules (18+)

The Tube, Deck 4, Aft - 10:00 pm

Join your Club Host, to find out who really rules!

**DINNER MENU**  
Animator's Palate : Captains Gala  
Enchanted Garden : Captains Gala  
Royal Court : Captains Gala

**DRINK OF THE DAY**  
High Tide (Alcoholic)  
Passion Cream Freeze (Non-Alcoholic)

**IMPORTANT NUMBERS**  
Fire/Security: 7-3001  
Medical Emergency: 7-3000  
Health Center: 7-1923

# ADULT ACTIVITY HIGHLIGHTS

## SENSES SPA FITNESS CLASSES & SEMINARS



*Yoga* - Donald's Pool - 7:00 am  
*Fab Abs* - Senses Spa & Salon - 7:45 am  
*Body Sculpt Boot Camp* (Nom. Fee) - Senses Fitness Center - 8:30 am  
*Complimentary Footprint Analysis* - Senses Spa & Salon - 9:30 am & 5:00 pm  
*Introduction to Acupuncture* - Senses Spa & Salon - 10:00 am  
*Detox for Health & Weight Loss* - Senses Spa & Salon - 10:30 am  
*Good Feet Seminar: Walking In Comfort* - Senses Fitness Center - 2:00 pm  
*Seminar: Burn Fat Faster* - Senses Spa & Salon - 2:30 pm  
*Group Cycling* - Senses Fitness Center - 4:30 pm

## TASTING CLASSES

*Rum Tasting* (21+) - Meridian - 1:00 pm  
*Champagne Tasting* (21+) - Ooh La La - 1:45 pm  
*Mixology* (21+) - Skyline - 2:00 pm & 4:00 pm; The Tube - 5:00 pm  
*Martini Tasting* (21+) - Meridian - 3:00 pm  
*Amari Tasting* (21+) - La Piazza - 4:15 pm  
*Tequila & Margarita Tasting* (21+) - Ooh La La - 4:30 pm  
 Please make reservations for tastings at Guest Services for a nominal fee.  
 Tasting Seminars are only for Guests 21 and older.

## 1820 SOCIETY: LUNCH

*Cabanas, Deck 11, Aft - 11:45 am*  
 Get to know your fellow Society members over lunch.



## 1820 SOCIETY: 2000'S MUSIC CHALLENGE

*O'Gills Pub, Deck 4, Aft - 2:15 pm*  
 Join your Cruise Staff as we navigate our way through the music of the 2000's.

## 1820 SOCIETY: GAME CHALLENGE

*The Tube, Deck 4, Aft - 9:45 pm*  
 Society members unite as a team for this interactive game.

## ART OF THE THEME SHOW TOUR

*Meridian, Deck 12, Aft - 9:15 am*  
 Join us for a guided tour highlighting the design, Imagineering and artistry of the Disney Fantasy. This tour is reserved for Guests 18 and over.

## 90'S MUSIC TRIVIA

*O'Gills Pub, Deck 4, Aft - 10:00 am*  
 "If you Wannabe" the winner, then join us as we test your 90's music knowledge.



## ESPN DREAM TEAM DRAFT DAY - BASKETBALL

*O'Gills Pub, Deck 4, Aft - 11:00 am*  
 Join the "Commissioner" and engage in this interactive fantasy basketball draft unlike anything you've ever seen!  
 Can YOU draft the greatest basketball team of all-time?

## MAJORITY RULES

*The Tube, Deck 4, Aft - 10:00 pm*  
 Join your Club Host, to find out who really rules!



# FUN FOR ALL AGES HIGHLIGHTS



## FAMILY MOVIE FUN TIME: THE GOOD DINOSAUR - (PG)

*Buena Vista Theatre, Deck 4 & 5, Midship - 8:30 am*  
 Come join us for a special opportunity to enjoy The Good Dinosaur in the Buena Vista Theatre. We will leave some lights on and turn the volume down as audience members are welcome to talk, leave their seats, move about and (most importantly) have fun!



## JAKE & THE NEVERLAND PIRATES

*D Lounge, Deck 4, Midship - 8:30 am*  
 A'HoY there mates, join us for an adventure in D Lounge with Jake and the Neverland Pirates.



## DISNEY ANIMATION: STAGING A SCENE

*D Lounge, Deck 4, Midship - 9:30 am*  
 Go behind the scenes at Walt Disney Animation Studios and learn how basic poses, silhouette, and placement (long shot, medium shot, close-up) enhance animation storytelling. Then, participate in a drawing exercise where you make the choices to communicate a story in this fun and fascinating enrichment program.

## TODDLER TIME

*Outlook, Deck 14, Midship - 10:30 am & 2:00 pm*  
 Join us for some fun activities that your toddler is sure to enjoy.

## \$10,000 MEGA JACKPOT BINGO

*Bingo Pre-Sales start at 11:00 am*  
*D Lounge, Deck 4, Midship - 11:15 am*  
 It's Big, it's Massive, it's Supersized! It's \$10,000 MEGA Jackpot Bingo! Take home \$10,000 if you can cover your card in 46 numbers or less. If not, we carry on to play for the biggest cash prize of the session, plus today's Disney Vacation Club sponsored raffle includes a \$100 Onboard Credit and prize-packs. Pre-Sales start 15 minutes prior to game.



## DISNEY VACATION CLUB GROUP PREVIEW

*D Lounge, Deck 4, Midship - 12:30 pm & 4:15 pm*  
 Want to learn more about taking magical vacations year after year? Please see a Disney Vacation Club representative on Deck 4, Midship, or call 7-2805 from your stateroom phone for more information about our interactive group presentation.



## STORYTIME WITH MRS. CLAUS

*Lobby Atrium, Deck 3, Midship - 1:15 pm*  
 Full of fun and whimsy, Mrs. Claus makes a very special visit to the ship's atrium to read classic holiday tales to all the children - and children at heart!

## TOWEL FOLDING

*The Tube, Deck 4, Aft - 2:00 pm*  
 Learn to create those amazing towel creatures you've seen in your stateroom all cruise long.

## FINAL JACKPOT BINGO

*Bingo Pre-Sales start at 3:45 pm*  
*Buena Vista Theatre, Deck 4 & 5, Midship - 4:15 pm*  
 The snowball jackpot MUST BE WON at this final session! Beat the line and get your cards early. Who will be the lucky winner? It could be you! Pre-Sales start 30 minutes prior to game.



## MIRROR MIRROR

*D Lounge, Deck 4, Midship - 7:30 pm & 9:45 pm*  
 Head to D Lounge for the fairest game show of them all, Mirror Mirror. Featuring the Magic Mirror and everyone's favorite dwarf, Dopey.



## MAJORITY RULES

*The Tube, Deck 4, Aft - 7:30 pm*  
 Join your Club Host, to find out who really rules!

## CLUB NEW YEAR'S EVE

*D Lounge, Deck 4, Midship - 10:15 pm*  
 Club New Year's Eve, you won't want to miss this journey of musical genres in history and performances by some of your favorite Cruise Staff. Bring your family and help us count down to a brand new year!



# YOUTH ACTIVITIES HIGHLIGHTS

## DINE & PLAY

A convenience for families dining at 8:15 pm, our Youth Activities counselors will be available at 9:15 pm at the entrance of Royal Court, Enchanted Garden and Animator's Palate dining rooms to bring registered children to join the fun in the Youth Activity areas.



Deck 5, Midship (7-5864) 9:00 am - 11:30 pm

## OPEN HOUSE

8:00 am - 9:00 am

Your chance to see our toddler space, it's a small world nursery.



Deck 5, Midship (7-1440)  
(3-12 years old) 9:00 am - 12:00 am

## MICKEY'S PUZZLE PLAYTIME

3:00 pm

Come and play with Mickey & friends as they share their favorite games, puzzles and dances!

## ONCE UPON A TIME

7:45 pm

Join Bartleby the Bookmaker for a magical, musical story time featuring a Disney Princess!



Deck 5, Midship (7-1445)  
(3-12 years old) 9:00 am - 12:00 am

## SUPER SLOPPY SCIENCE

11:00 am

Join Professor Make-O-Mess in some of the most extreme experiments you will ever see in the world of Super Sloppy Science!

## DISNEY ANIMATION: CREATING A CHARACTER

6:00 pm

Go behind the scenes at Walt Disney Animation Studios as Walt Disney himself talks about his most famous characters, then learn the basic techniques of drawing Mickey and Donald in this fun and interesting enrichment program.



Deck 13, Midship (7-9743)  
(11-14 years old) 9:00 am - 1:00 am

## DISNEY ANIMATION: CARTOON PHYSICS

4:15 pm

Go behind the scenes at Walt Disney Animation Studios and see how flat drawings and pencil lines can come to life through basic techniques such as Stretch and Squash, and create your own "bouncing ball" animation exercise in this entertaining and fun enrichment program.

## MAGIC SHOW

9:00 pm

The Magnificent Magician will demonstrate to you some of the best known magic tricks on the sea.



Entrance on Deck 4, Forward (7-9418)  
(14-17 years old) 9:00 am - 2:00 am

## HOW WELL DO YOU KNOW YOUR COUNSELOR?

10:00 pm

Do you think you know all there is to know about your counselors? Come test out your knowledge with all of your friends!

## HOLIDAY PARTY

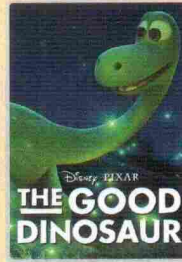
12:00 am

Join your fellow cruisers for a festive holiday party.

# BUENA VISTA THEATRE

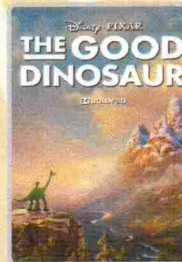
Deck 4 & 5, Midship  
Today's Movies

## FAMILY MOVIE FUN TIME

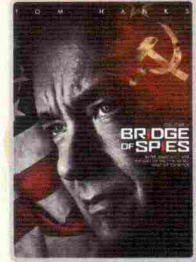


8:30 am

Duration: 1 hr 40 mins  
Rating: PG

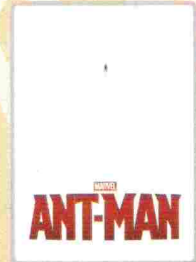


5:30 pm & 8:30 pm  
Duration: 1 hr 40 mins  
Rating: PG



1:00 pm

Duration: 2 hrs 15 mins  
Rating: PG-13



10:30 pm  
Duration: 1 hr 57 mins  
Rating: PG-13



## FAMILY VARIETY ACT

Featuring the  
Comedy & Juggling  
of Michael Holly,  
as he entertains the entire  
family in this fun-filled show.

Walt Disney Theatre,  
Deck 3 & 4, Forward,  
2:00 pm

(Doors open 15 minutes prior to show time)



## ADULT VARIETY ACT

Featuring the  
Comedy & Hypnosis  
of Ricky Kalmon,  
as he entertains you in this  
adult exclusive show.

Walt Disney Theatre (18+),  
Deck 3 & 4, Forward,  
10:45 pm

(Doors open 15 minutes prior to show time)

## YOUTH ACTIVITIES OPEN HOUSE

Open House is an opportunity for all to come and participate in a variety of exciting activities and free time in the Oceaneer Club, Oceaneer Lab, it's a small world nursery, Vibe and Edge throughout the cruise. During these times secured programming will still be offered in the other venue for those looking to check their children into care.

Disney's Oceaneer Club: 9:00 am - 10:30 am

Edge: 9:00 am - 10:00 am & 5:00 pm - 7:00 pm

Vibe: 9:00 am - 10:00 am & 6:30 pm - 9:00 pm

# ADULT ACTIVITY HIGHLIGHTS

## SENSES SPA FITNESS CLASSES & SEMINARS

*Yoga* - Donald's Pool - 7:00 am  
*Fab Abs* - Senses Spa & Salon - 7:45 am  
*Body Sculpt Boot Camp* (Nom. Fee) - Senses Fitness Center - 8:30 am  
*Complimentary Footprint Analysis* - Senses Spa & Salon - 9:30 am & 5:00 pm  
*Introduction to Acupuncture* - Senses Spa & Salon - 10:00 am  
*Detox for Health & Weight Loss* - Senses Spa & Salon - 10:30 am  
*Good Feet Seminar: Walking In Comfort* - Senses Fitness Center - 2:00 pm  
*Seminar: Burn Fat Faster* - Senses Spa & Salon - 2:30 pm  
*Group Cycling* - Senses Fitness Center - 4:30 pm



## TASTING CLASSES

*Rum Tasting* (21+) - Meridian - 1:00 pm  
*Champagne Tasting* (21+) - Ooh La La - 1:45 pm  
*Mixology* (21+) - Skyline - 2:00 pm & 4:00 pm; The Tube - 5:00 pm  
*Martini Tasting* (21+) - Meridian - 3:00 pm  
*Amari Tasting* (21+) - La Piazza - 4:15 pm  
*Tequila & Margarita Tasting* (21+) - Ooh La La - 4:30 pm  
 Please make reservations for tastings at Guest Services for a nominal fee.  
 Tasting Seminars are only for Guests 21 and older.

## 1820 SOCIETY: LUNCH

*Cabanas, Deck 11, Aft - 11:45 am*  
 Get to know your fellow Society members over lunch.



## 1820 SOCIETY: 2000'S MUSIC CHALLENGE

*O'Gills Pub, Deck 4, Aft - 2:15 pm*  
 Join your Cruise Staff as we navigate our way through the music of the 2000's.

## 1820 SOCIETY: GAME CHALLENGE

*The Tube, Deck 4, Aft - 9:45 pm*  
 Society members unite as a team for this interactive game.

## ART OF THE THEME SHOW TOUR

*Meridian, Deck 12, Aft - 9:15 am*  
 Join us for a guided tour highlighting the design, Imagineering and artistry of the Disney Fantasy. This tour is reserved for Guests 18 and over.

## 90'S MUSIC TRIVIA

*O'Gills Pub, Deck 4, Aft - 10:00 am*  
 "If you Wannabe" the winner, then join us as we test your 90's music knowledge.



## ESPN DREAM TEAM DRAFT DAY - BASKETBALL

*O'Gills Pub, Deck 4, Aft - 11:00 am*  
 Join the "Commissioner" and engage in this interactive fantasy basketball draft unlike anything you've ever seen! Can YOU draft the greatest basketball team of all-time?

## MAJORITY RULES

*The Tube, Deck 4, Aft - 10:00 pm*  
 Join your Club Host, to find out who really rules!



# FUN FOR ALL AGES HIGHLIGHTS



## FAMILY MOVIE FUN TIME: THE GOOD DINOSAUR - (PG)

*Buena Vista Theatre, Deck 4 & 5, Midship - 8:30 am*  
 Come join us for a special opportunity to enjoy The Good Dinosaur in the Buena Vista Theatre. We will leave some lights on and turn the volume down as audience members are welcome to talk, leave their seats, move about and (most importantly) have fun!



## JAKE & THE NEVERLAND PIRATES

*D Lounge, Deck 4, Midship - 8:30 am*  
 A'HoY there mates, join us for an adventure in D Lounge with Jake and the Neverland Pirates.



## DISNEY ANIMATION: STAGING A SCENE

*D Lounge, Deck 4, Midship - 9:30 am*  
 Go behind the scenes at Walt Disney Animation Studios and learn how basic poses, silhouette, and placement (long shot, medium shot, close-up) enhance animation storytelling. Then, participate in a drawing exercise where you make the choices to communicate a story in this fun and fascinating enrichment program.

## TODDLER TIME

*Outlook, Deck 14, Midship - 10:30 am & 2:00 pm*  
 Join us for some fun activities that your toddler is sure to enjoy.

## \$10,000 MEGA JACKPOT BINGO

*Bingo Pre-Sales start at 11:00 am*  
*D Lounge, Deck 4, Midship - 11:15 am*  
 It's Big, it's Massive, it's Supersized! It's \$10,000 MEGA Jackpot Bingo! Take home \$10,000 if you can cover your card in 46 numbers or less. If not, we carry on to play for the biggest cash prize of the session, plus today's Disney Vacation Club sponsored raffle includes a \$100 Onboard Credit and prize-packs. Pre-Sales start 15 minutes prior to game.



## DISNEY VACATION CLUB GROUP PREVIEW

*D Lounge, Deck 4, Midship - 12:30 pm & 4:15 pm*  
 Want to learn more about taking magical vacations year after year? Please see a Disney Vacation Club representative on Deck 4, Midship, or call 7-2805 from your stateroom phone for more information about our interactive group presentation.



## STORYTIME WITH MRS. CLAUS

*Lobby Atrium, Deck 3, Midship - 1:15 pm*  
 Full of fun and whimsy, Mrs. Claus makes a very special visit to the ship's atrium to read classic holiday tales to all the children - and children at heart!

## TOWEL FOLDING

*The Tube, Deck 4, Aft - 2:00 pm*  
 Learn to create those amazing towel creatures you've seen in your stateroom all cruise long.

## FINAL JACKPOT BINGO

*Bingo Pre-Sales start at 3:45 pm*  
*Buena Vista Theatre, Deck 4 & 5, Midship - 4:15 pm*  
 The snowball jackpot MUST BE WON at this final session! Beat the line and get your cards early. Who will be the lucky winner? It could be you! Pre-Sales start 30 minutes prior to game.



## MIRROR MIRROR

*D Lounge, Deck 4, Midship - 7:30 pm & 9:45 pm*  
 Head to D Lounge for the fairest game show of them all, Mirror Mirror. Featuring the Magic Mirror and everyone's favorite dwarf, Dopey.



## MAJORITY RULES


*The Tube, Deck 4, Aft - 7:30 pm*  
 Join your Club Host, to find out who really rules!

## CLUB NEW YEAR'S EVE

*D Lounge, Deck 4, Midship - 10:15 pm*  
 Club New Year's Eve, you won't want to miss this journey of musical genres in history and performances by some of your favorite Cruise Staff. Bring your family and help us count down to a brand new year!



# MORE TO ENJOY WHILE ONBOARD



The puppies from 101 Dalmatians have gone missing! Use your special detective "badge" to track down the puppies and catch the villain who took them.

**Deck 2 & 5, Midship,**  
9:00 am - 10:00 pm



**SENSES**  
SPA & SALON

**SALON TASTER SPECIAL**

- Scalp Massage
- European Facial
- Hand Treatment
- Sunglow Makeover
- Conditioning Hair Treatment
- Eye Collagen Treatment
- Foot & Ankle Massage
- Neck & Shoulder Massage

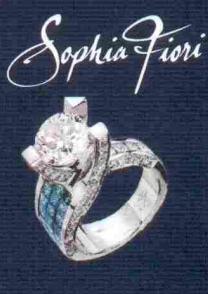
Three for 99.00  
Five for 119.00  
All Eight for 139.00

**GUESS THE CARAT!**

Guess the carat weight of one of our exquisite Sophia Fiori diamond rings. Whoever guesses closest wins a 5K midnight Sapphire!

9:30 am - 7:15 pm.  
Winners announced and raffle at 7:30 pm. Must be present to win!

White Caps, Deck 3, Forward.  
\*This offer is not affiliated with Disney Cruise Line®.



**Shutters**

**YOUR CRUISE MEMORIES ON A PHONE CASE**

Celebrate your cruise vacation with a commemorative phone case. Use your Key To The World Card in Shutters Digital to order your Phone Case and pick up before you debark. Ask your friendly photographer for assistance.

**Also, Don't forget today is the last day to take your photos on the AquaDuck ride.**



## BOOK ONBOARD AND SAVE!

Explore all the itineraries Disney Cruise Line offers - from the Caribbean and Bahamas to Alaska or Europe. Save when you book your next family adventure onboard! Visit Disney Vacation Planning, Deck 4, Midship, for more information.

## DISNEY VACATION CLUB® GROUP PREVIEW

Want to learn more about taking magical vacations year after year? Please see a Disney Vacation Club representative on Deck 4, Midship, or call 7-2805 from your stateroom phone for more information about our interactive group presentation.

## RUNDISNEY: CASTAWAY CAY 5K REGISTRATION (10+)

Sign up today for the runDisney: Castaway Cay 5K! Please visit the Port Adventures Desk or the Guest Services Desk to register at anytime prior to our arrival at Disney's Castaway Cay. Please note that runners must be 10 years of age or older to participate.

## ARR-CADE

Where can you be a ninja, play the guitar like a rock star, race a car down the streets of Tokyo and along the way WIN some great prizes? Arr-CADE located Deck 11, Aft where the pirates play.

## Connect@Sea

We are now offering a NEW and improved Internet service to stay connected on your cruise like no other in the industry! Internet packages range from \$0.25 per MB - \$89.00 (1000 MB package). For more information contact your Connect@Sea Expert or Guest Services onboard.

## Disney CRUISE LINE. PORT ADVENTURES

Disney's private island Castaway Cay not only offers a terrific family beach day, but many other excursions and rentals to compliment. Snorkeling, bike and float rentals, parasailing plus much more, means that there is something for everyone at Disney's Castaway Cay.

To make your reservation, visit the Port Adventures desk, Deck 5, Midship.

## SHOPPING

### CAPTAIN'S SIGNING

Don't miss your chance to meet the Master of the Disney Fantasy! Stop by White Caps today at 12:15 pm where you can have your cruise mementos signed by our Captain. Deck 3, Forward.

### DISNEY CRUISE LINE STOCKING STUFFERS

Finish your holiday shopping onboard when you visit Mickey's Mainsail, Sea Treasures, and White Caps where you'll find great stocking stuffers for the whole family such as Princess and Pirate accessories, trading pins, brand name sunglasses and watches. Deck 3, Forward.

### THE DISNEY PARKS COLLECTION BY PANDORA JEWELRY

The Disney Parks Collection by PANDORA Jewelry features hand-finished .925 sterling silver and 14K gold charms inspired by some of Disney's most beloved characters. Visit White Caps on Deck 3, Forward, where you'll find a specially designed sterling silver charm featuring a Disney Cruise Line ship.

### PETITE ART PRINTS AT THE VISTA GALLERY

Are you an art lover on a budget? Do you have limited space in your suitcase or on your walls at home? There's no need to miss out on owning inspiring creations by some of Disney's greatest artists! Stop by the Vista Gallery and check out the various petite prints of artwork created by these celebrated artists. Deck 4, Midship.

### GREAT REASON TO SHOP ONBOARD!

The Force is strong onboard Disney Cruise Line! Head to the onboard merchandise shops, Deck 3, Forward, where you can purchase a Disney Cruise Line Star Wars Backpack for \$17.95 with any merchandise purchase of \$50.00 or more. While supplies last. Offer subject to restrictions and change without notice.

### FRAGRANCE OF THE DAY

Stop by White Caps today and see if our selected scent suits your style! Deck 3, Forward.

DISNEY 03-05-2015 ©DISNEY

## IMPORTANT INFORMATION

### Security Notice

All Guests (including children) who wish to disembark the ship are required to present their Key to the World card at the gangway. A photo ID is also required for those Guests who are 18 years of age or older. Guests under the age of 18 are required to have a parent, guardian, or other responsible adult sign an authorization form at the Guest Service desk. If they wish to go ashore unaccompanied or with any adult from another stateroom.

**Sunscreen/Insect Repellent Advisory**  
Use sunscreen first and protect against mosquito bites and related illnesses by applying insect repellent on top of sunscreen when going ashore. Insect repellent is available for purchase in White Caps.

### Cold and Flu Reminder

Please wash hands frequently and thoroughly, particularly before meals. Contact the Health Center by dialing 7-1923, should anyone in your party become ill.

### Corridor Quiet Hours

As a courtesy to all our Guests, please recognize quiet hallway hours from 10:00 pm til 8:00 am

### Inclement Weather

For the safety of all Guests, outdoor events may be changed due to unforeseen weather conditions.

### Environmental Message

With Disney's commitment to the Environment, please refrain from throwing anything over the Ship's side. Thank you!

### No Reserved Seats Policy

As a courtesy to all our Guests, we kindly advise that the saving of seats is not permitted in the Walt Disney Theatre, and the saving of the sun loungers is not permitted on Deck 11, 12, and 13. Items left unattended will be returned to lost and found at Guest Services, Deck 3 Midship.

### Smoking

For the comfort of our Guests, the following areas are designated as smoking areas:

\*Deck 13, forward, port side by Currents  
\*Deck 12, aft, port side outdoor area that is accessible through the Meridian Lounge  
\*Deck 4, aft, port side from 6:00 pm to 6:00 am only (all of Deck 4 is non-smoking from 6:00 am to 6:00 pm)

Smoking is prohibited inside all Guest staterooms and on stateroom verandahs. Guests found smoking in their staterooms or on their verandahs will be charged a \$250 stateroom recovery fee. Electronic cigarettes may only be used in designated smoking areas.

### Walt Disney Theatre

Theatrical performances may use artificial fog, strobe lights, pyrotechnics and other special effects. For the safety of our performers and the comfort of those around you, the use of any photography, video recording device or any electronic equipment is prohibited.

### Verandah Safety

Please do not leave any combustible materials on your balcony when not present in your stateroom for safety reasons.