

PERSONAL NAVIGATOR

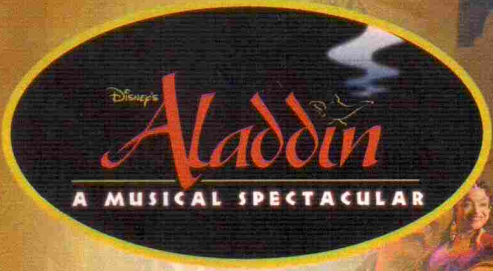


Sunrise 6:48 am Sunset: 5:47 pm
Evening Attire: Formal

Today: Partly Sunny High: 78°F/26°C
Tomorrow: Partly Sunny High: 78°F/26°C

SUNDAY, NOVEMBER 29, 2015

DAY AT SEA



A fast-paced, musical comedy based on the beloved animated film.

Aladdin, the "street rat" of Agrabah, meets a wise-cracking Genie, battles the evil Jafar, and falls in love with the beautiful and spirited Princess Jasmine. Disney storytelling at its best.



WALT DISNEY THEATRE

Deck 3 & 4 Forward
6:15 pm & 8:30 pm



As a courtesy to all Guests, we kindly advise that the saving of seats is **not** permitted in the Walt Disney Theatre.



Assistance available at the entrance to the Walt Disney Theatre 30 minutes prior to show time.

Disney FANTASY Fun Facts

Tonnage: 130,000 Gross Tons
Height: 216 Feet
Length: 1115 Feet

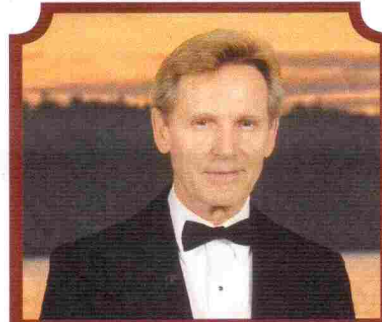
Important Dates

Name Announcement: *March 10, 2009*
Steel Cutting: *March 16, 2010*
Keel Laying: *February 11, 2011*
Delivery: *February 9, 2012*

Almost four football fields in length, the Disney Fantasy is longer than the height of the Eiffel Tower in Paris (1,063 feet). She is also longer than the height of New York City's famous Chrysler building (1,047 feet).

Disney Fantasy's Whistle

Will be played after today's noon announcement
The Disney Fantasy's whistle, a prominent element of the "Sailing Away" deck party at the start of the cruise, is quite the musical talent. It's able to perform not just the first musical line of "When You Wish Upon a Star" but also the second line of the song ("makes no difference who you are") plus several measures of "Yo Ho (A Pirate's Life for Me)," "It's a Small World," "Be Our Guest," "Hi Diddle Dee Dee (An Actor's Life for Me)" and "A Dream is a Wish."



CAPTAIN'S RECEPTION

Enjoy live music and a cocktail while meeting some of the ship's officers.

Lobby Atrium, Deck 3, Midship,
5:00 & 7:30 pm

Enjoy an exclusive photo opportunity with Commodore Tom at
5:30 & 7:30 pm, Lobby Atrium

Don't Miss:

Disney Animation: Creating a Character

D Lounge, Deck 4, Midship - 9:45 am, 6:15 pm & 8:30 pm
Go behind the scenes at Walt Disney Animation Studios as Walt Disney himself talks about his most famous characters, then learn the basic techniques of drawing your favorite pals in this fun and interesting enrichment program.

Family Variety: Buckets N Boards

Walt Disney Theatre, Deck 3 & 4, Forward - 2:00 pm
Featuring Rhythm and Comedy of Buckets N Boards, in this fun for all the family cabaret style show.

Family Variety: Rich Purpura

The Tube, Deck 4, Aft - 7:30 pm
Featuring the Comedy and Magic of Rich Purpura, in this fun for all the family cabaret style show.

Variety Show: Rich Purpura (18+)

The Tube, Deck 4, Aft - 10:45 pm
Featuring the Comedy and Magic of Rich Purpura, in this Adult exclusive cabaret style show.



Welcome Aboard Photo Raffle

Stop at Shutters today before 11:00 am and drop of your raffle ticket, for a chance to win a photo CD worth \$149.95.
*Terms & Condition apply.

DINNER MENU

Animator's Palate : Pacific Rim Cuisine
Enchanted Garden : Continental Market Cuisine
Royal Court : French Cuisine

DRINK OF THE DAY

Paradise Punch (Alcoholic)
Coco Bali (Non Alcoholic)

IMPORTANT NUMBERS

Fire/Security: 7-3001
Medical Emergency: 7-3000
Health Center: 7-1923

ADULT ACTIVITY HIGHLIGHTS

SENSES SPA FITNESS CLASSES & SEMINARS



Yoga - Donald's Pool - 7:00 am
Fab Abs - Senses Spa & Salon - 7:45 am
Body Sculpt Boot Camp (Nom. Fee) - Senses Fitness Center - 8:30 am
Introduction to Acupuncture - Senses Spa & Salon - 9:15 am
Detox for Health & Weight Loss - Senses Spa & Salon - 10:00 am
Ultimate Hair Cut - Senses Spa & Salon - 11:00 am
Acupuncture Pain Relief - Senses Fitness Center - 1:15 pm
Good Feet Seminar: Walking In Comfort - Senses Spa & Salon - 2:00 pm
Seminar: Burn Fat Faster - Senses Spa & Salon - 2:30 pm
Group Cycling - Senses Fitness Center - 4:00 pm
Complimentary Footprint Analysis - Senses Spa & Salon - 5:00 pm

TASTING CLASSES

Champagne Tasting (21+) - Ooh La La - 12:15 pm
Martini Tasting (21+) - Meridian - 1:00 pm
Stem to Stern Wine Tasting (21+) - Ooh La La - 1:45 pm
Mixology (21+) - Meridian - 3:00 pm
Tequila & Margarita Tasting (21+) - Ooh La La - 4:30 pm
Whiskey Tasting (21+) - Cove Cafe - 10:00 pm
Cognac Tasting (21+) - Meridian - 10:30 pm
 Please make reservations for tastings at Guest Services for a nominal fee.
 Tasting Seminars are only for Guests 21 and older.

1820 SOCIETY: LUNCH

Royal Court, Deck 3, Midship - 12:15 pm
 Get to know your fellow Society members over lunch.



1820 SOCIETY: MINI GOLF

Goofy Golf, Deck 13, Aft - 3:15 pm
 Can you get a hole in one? Give it a try with some mini golf.

1820 SOCIETY: GAME CHALLENGE

The Tube, Deck 4, Aft - 9:45 pm
 Society members unite as a team for this interactive game.

ANYONE CAN COOK - LOBSTER RAVIOLI



D Lounge, Deck 4, Midship - 2:15 pm
 From our galley to yours. Join our chefs as they show you how to prepare delicious dishes. Today's Menu - Lobster Ravioli

LONDON ROCKS



The Tube, Deck 4, Aft - 11:15 pm
 Hop onboard and hit the dance floor as we take you on a ride through the charts, partying it up to some of the hottest British hits! With a special performance by the Underground Dancers.



FUN FOR ALL AGES HIGHLIGHTS

WAKE UP WITH DISNEY JUNIOR



D Lounge, Deck 4, Midship - 8:30 am
 What happens when you experience unlimited fun with your favorite Disney Junior shows? You get an exciting dance party designed especially for preschoolers ages seven and under.



DISNEY ANIMATION: CREATING A CHARACTER

D Lounge, Deck 4, Midship - 9:45 am, 6:15 pm & 8:30 pm
 Go behind the scenes at Walt Disney Animation Studios as Walt Disney himself talks about his most famous characters, then learn the basic techniques of drawing your favorite pal in this fun and interesting enrichment program.



DIAMOND JACKPOT BINGO

Bingo Pre-Sales start at 11:00 am
D Lounge, Deck 4, Midship - 11:15 am
 Join us for 4 cash prize games and your chance to win a diamond pendant! Everyone attending will also receive a FREE Island Charm courtesy of Diamonds International! Pre-Sales start 15 minutes prior to the game.

TODDLER TIME

Outlook, Deck 14, Midship - 11:00 am
 Join us for some fun activities that your toddler is sure to enjoy.



MICKEY 200

The Tube, Deck 4, Aft - 12:00 pm
 Don't eat your vegetables... race them in this wild and wacky charge to the finish line. May the best veggie win! (Limited Availability)



DISNEY VACATION CLUB GROUP PREVIEW

D Lounge, Deck 4, Midship - 12:30 pm
 Want to learn more about taking magical vacations year after year? Please see a Disney Vacation Club representative on Deck 4, Midship, or call 7-2805 from your stateroom phone for more information about our interactive group presentation.

VILLAINS QUOTE TRIVIA

La Piazza, Deck 4, Aft - 1:00 pm
 "Off with their heads" - know the Villain who said this? Then join us for our fun Disney Villain's quote trivia!

PORT & SHOPPING TALK

Buena Vista Theatre, Deck 4 & 5, Midship - 1:45 pm
 Join your Port and Shopping Guides to learn about the incredible tax & duty free shopping ashore this cruise! Free charm bracelet for all in attendance and a raffle to win over \$1000 in prizes and giveaways!

ICE BREAKERS

The Tube, Deck 4, Aft - 3:00 pm
 Fancy some fun? Want to get to know your fellow Guests? Then join us as we break the ice in this fun filled game show.



\$5,000 MEGA JACKPOT BINGO

Bingo Pre-Sales start at 4:00 pm
D Lounge, Deck 4, Midship - 4:15 pm
 Don't miss your chance to take home big money! 4 CASH prize games and great raffle prizes to be won! Complete the fourth game in 46 numbers or less and win the \$5,000 Mega Jackpot! Pre-Sales start 15 minutes prior to game.



CLUB D DANCE PARTY

D Lounge, Deck 4, Midship - 7:30 pm & 9:45 pm
 Join your Cruise Staff as we turn D Lounge into an electrifying family nightclub. Club D, where everyone is a VIP!



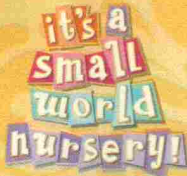
FAMILY SUPERSTAR KARAOKE

D Lounge, Deck 4, Midship - 10:30 pm
 Join your Cruise Staff in D Lounge tonight and sing along to your favorite song - fun for everyone.

YOUTH ACTIVITIES HIGHLIGHTS

DINE & PLAY

A convenience for families dining at 8:15 pm, our Youth Activities counselors will be available at 9:15 pm at the entrance of Royal Court, Enchanted Garden and Animator's Palate dining rooms to bring registered children to join the fun in the Youth Activity areas.



Deck 5, Midship (7-5864) 9:00 am - 11:30 pm

OPEN HOUSE

8:00 am - 9:00 am

Your chance to see our toddler space, it's a small world nursery.



Deck 5, Midship (7-1440)
(3-12 years old) 9:00 am - 12:00 am

TINKER BELL'S TALENT SHOW

2:30 pm

Tinker Bell has come from Pixie Hollow to Disney Cruise Line to help young cruisers discover their fairy talents.

PLUTO'S PAJAMA PARTY

9:45 pm

Bring the little ones in their pajamas but there will be anything but sleep when Pluto and friends host the ultimate slumber party!



Deck 5, Midship (7-1445)
(3-12 years old) 9:00 am - 12:00 am

SUPER SLOPPY SCIENCE

10:30 am

Join Professor Make-O-Mess in some of the most extreme experiments you will ever see in the world of Super Sloppy Science!

DETECTIVE SCHOOL

9:30 pm

It's a crime how much fun you'll have as you go CSI Goofy style.



Deck 13, Midship (7-9743)
(11-14 years old) 9:00 am - 1:00 am

DISNEY ANIMATION: CREATING A CHARACTER

1:00 pm

Go behind the scenes at Walt Disney Animation Studios as Walt Disney himself talks about his most famous characters, then learn the basic techniques of drawing Mickey and Donald in this fun and interesting enrichment program.

MIRROR, MIRROR

11:45 pm

Join the Magic Mirror and Dopey in the fairest game show of them all, Mirror, Mirror. There's trivia, singing and even a relay race. Hi Ho, Hi Ho, it's off to play we go!



Entrance on Deck 4, Forward (7-9418)
(14-17 years old) 9:00 am - 2:00 am

DIVE INTO DJ'ING

3:30 pm

Hop on the turn tables and learn to scratch with our Club DJ.

GENDER WARS

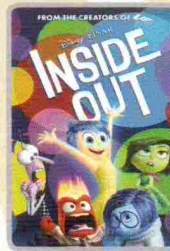
10:45 pm

Join us as we find out who really are the kings or queens of the castle.

BUENA VISTA THEATRE

Deck 4 & 5, Midship
Today's Movies

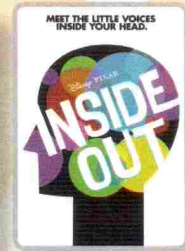
DOLBY 3D



8:30 am
Duration:
1 hr 42 mins
Rating: PG

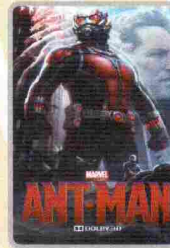


10:45 am
Duration:
1 hr 57 mins
Rating: PG-13

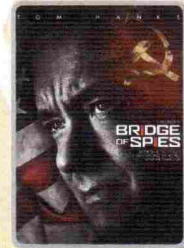


3:15 pm
Duration:
1 hr 42 mins
Rating: PG

DOLBY 3D



5:30 pm & 8:15 pm
Duration: 1 hr 57 mins
Rating: PG-13



10:30 pm
Duration: 2 hrs 15 mins
Rating: PG-13



FAMILY VARIETY ACT

Featuring the
Comedy & Rhythm
of Buckets N Boards,
as they entertain the
entire family in this
fun-filled show.

Walt Disney Theatre,
Deck 3 & 4, Forward,
2:00 pm



VARIETY ACT

Enjoy the Comedy and
Magic of Rich Purpura.

Family Show
The Tube,
Deck 4, Aft,
7:30 pm
Adult Show
The Tube (18+),
Deck 4, Aft,
10:45 pm

YOUTH ACTIVITIES OPEN HOUSE

Open House is an opportunity for all to come and participate in a variety of exciting activities and free time in the Oceaneer Club, Oceaneer Lab, it's a small world nursery, Vibe and Edge throughout the cruise. During these times secured programming will still be offered in the other venue for those looking to check their children into care.

Disney's Oceaneer Club: 9:00 am - 10:15 am

Disney's Oceaneer Lab: 7:00 pm - 8:30 pm

Edge: 9:00 am - 10:00 am & 5:30 pm - 7:00 pm

Vibe: 9:00 am - 10:30 am & 6:30 pm - 9:00 pm

MORE TO ENJOY WHILE ONBOARD

POPULAR HOME PORTS FOR LIMITED-TIME

In the fall of 2016, Disney Cruise Line will return to New York with sailings to the Bahamas, Miami with longer 7-night voyages for the very first time, and a return to Galveston, TX with a line-up of 7-night itineraries including a stop at Castaway Cay to round out the season. Visit Disney Vacation Planning, Deck 4, Midship, for more information.

DISNEY VACATION CLUB® GROUP PREVIEW

Want to learn more about taking magical vacations year after year? Please see a Disney Vacation Club representative on Deck 4, Midship, or call 7-2805 from your stateroom phone for more information about our interactive group presentation.

PORT AND SHOPPING INFORMATION

Join your Port Shopping Guides, Candice and Mark, to learn about the incredible tax & duty free shopping ashore this cruise, everything from Diamonds to T-Shirts, Rolex to Rum-cake! Port Shopping Show, Buena Vista Theatre, Deck 4, Forward 1:45 pm. FREE Charm Bracelet for everyone who attends! Raffle to win OVER \$1000 in Prizes & Giveaways! Then join Candice and Mark as they give insider tips on shopping for gemstones in the Caribbean at the Diamond & Gemstone Seminar, The Tube, Deck 4, Aft, 4:00 pm.

Connect @ Sea

We are now offering a NEW and improved Internet service to stay connected on your cruise like no other in the industry! Internet packages range from \$0.25 per MB - \$89.00 (1000 MB package). For more information contact your Connect@Sea Expert or Guest Services onboard.

ONBOARD AIRLINE CHECK IN

Stop by the Guest Services Desk, Deck 3, Midship to find out about enrolling in our Onboard Airline Check In Service.

RUNDISNEY: CASTAWAY CAY 5K REGISTRATION (10+)

Sign up today for the runDisney: Castaway Cay 5K! Please visit the Port Adventures Desk or the Guest Services Desk to register at anytime prior to our arrival at Disney's Castaway Cay. Please note that runners must be 10 years of age or older to participate.

MIDSHIP DETECTIVE AGENCY

The puppies from 101 Dalmatians have gone missing! Use your special detective "badge" to track down the puppies and catch the villain who took them. Decks 2 & 5, Midship.

Disney Cruise Line PORT ADVENTURES

The best way to explore our ports of call is through the eyes of a Port Adventure.

Why not swim with stingrays in Grand Cayman or explore the ruins in Cozumel.

Stop by the Port Adventures desk, Deck 5, Midship.

SHOPPING

BIBBIDI BOBBIDI BOUTIQUE

Young Princesses and Princes can get ready for a formal evening with a makeover at the Bibbidi Bobbidi Boutique. Make your reservations by visiting Bibbidi Bobbidi Boutique, Deck 5, Midship or dialing extension 7-9438. Limited space available.

HIDDEN CHARACTERS IN THOMAS KINKADE ART!

Known as the "Painter of Light," Thomas Kinkade is one of Disney's most celebrated artists having created an array of enchanting artwork. Stop by the Vista Gallery today to view his unique collection of paintings featuring some of your favorite Disney characters! Also, take the time to try and find all of the hidden Disney characters scattered throughout his paintings. Are you up to the challenge? Deck 4, Midship.

RED CARPET SOPHIA FIORI DIAMOND UNVEILING

Drop in at White Caps today to meet the diamond specialist with Sophia Fiori. Whether you are a Hollywood celebrity or a full time Mom, every woman experiences a Red Carpet Moment when putting on Sophia Fiori Jewelry so treat yourself, you deserve it! Deck 3, Forward.

THE DISNEY PARKS COLLECTION BY PANDORA JEWELRY

The Disney Parks Collection by PANDORA Jewelry features hand-finished .925 sterling silver and 14K gold charms inspired by some of Disney's most beloved characters. Visit White Caps on Deck 3, Forward, where you'll find a specially designed sterling silver charm featuring a Disney Cruise Line ship.

FESTIVE HOLIDAY TREE ORNAMENTS

Adorn your tree this year with the festive holiday ornaments available onboard such as the candy cane striped anchor ornament designed especially for Disney Cruise Line available in Mickey's Mainsail and the sparkling Swarovski ornaments available in White Caps. Deck 3, Forward.



SENSES
SPA & SALON

SPA SPECIAL

IONITHERMIE

Would you like to lose between 1 - 8 inches?
Speed up your metabolism?
Firm your muscle tone?
Improve appearance of cellulite?
If so, then Ionithermy is the best treatment for you!
50 min. \$155



Bibbidi Bobbidi Boutique

Fairy Godmothers-in-Training are ready to give your Prince and Princess the transformation of a lifetime.

Available for a limited time, princesses can select the festive Holiday Minnie Package!

Make your reservations by visiting Bibbidi Bobbidi Boutique, Deck 5, Midship or dialing extension 7-9438. Limited space available.

Shutters

FORMAL PORTRAITS TONIGHT!

Now that the family is dressed up and ready to enjoy the evening, capture the memories in your formal attire by visiting our professional portrait studios located in the Lobby Atrium, Deck 3, Midship.

5:00 pm - 6:00 pm
7:15 pm - 8:30 pm
9:30 pm - 10:30 pm

*Please note that photos are available for viewing on our interactive photo kiosks approximately five hours after being taken and are only available for purchase during this cruise.

IMPORTANT INFORMATION

Security Notice

All Guests (including children) who wish to disembark the ship are required to present their Key to the World card at the gangway. A photo ID is also required for those Guests who are 18 years of age or older. Guests under the age of 18 are required to have a parent, guardian or other responsible adult sign an authorization form at the Guest Service desk if they wish to go ashore unaccompanied or with any adult from another stateroom.

Sunscreen/Insect Repellent Advisory
Use sunscreen first and protect against mosquito bites and related illnesses by applying insect repellent on top of sunscreen when going ashore. Insect repellent is available for purchase in White Caps.

Cold and Flu Reminder

Please wash hands frequently and thoroughly, particularly before meals. Contact the Health Center by dialing 7-1923, should anyone in your party become ill.

Corridor Quiet Hours

As a courtesy to all our Guests, please recognize quiet hallway hours from 10:00 pm til 8:00 am

Inclement Weather

For the safety of all Guests, outdoor events may be changed due to unforeseen weather conditions.

Environmental Message

With Disney's commitment to the Environment, please refrain from throwing anything over the Ship's side. Thank you!

No Reserved Seats Policy

As a courtesy to all our Guests, we kindly advise that the saving of seats is not permitted in the Walt Disney Theatre, and the saving of the sun loungers is not permitted on Deck 11, 12, and 13. Items left unattended will be returned to lost and found at Guest Services, Deck 3 Midship.

Smoking

For the comfort of our Guests, the following areas are designated as smoking areas:

*Deck 13, forward, port side by Currents
*Deck 12, aft, port side outdoor area that is accessible through the Meridian Lounge
*Deck 4, aft, port side from 6:00 pm to 6:00 am only (all of Deck 4 is non-smoking from 6:00 am to 6:00 pm)

Smoking is prohibited inside all Guest staterooms and on stateroom verandahs. Guests found smoking in their staterooms or on their verandahs will be charged a \$250 stateroom recovery fee. Electronic cigarettes may only be used in designated smoking areas.

Walt Disney Theatre

Theatrical performances may use artificial fog, strobe lights, pyrotechnics and other special effects. For the safety of our performers and the comfort of those around you, the use of any photography, video recording device or any electronic equipment is prohibited.

Verandah Safety

Please do not leave any combustible materials on your balcony when not present in your stateroom for safety reasons.